

PUBLIC UTILITIES COMMISSION

505 VAN NESS AVENUE

SAN FRANCISCO, CA 94102-3298



October 14, 2009

Advice Letter 2100-E

Ronald van der Leeden, Director
Rates, Revenues and Tariffs
San Diego Gas and Electric
8330 Century Park Court, CP32C
San Diego, CA 92123-1548

**Subject: Customer Energy Network – Implementation of
Electronic Consent**

Dear Mr. van der Leeden:

Advice Letter 2100-E is effective September 1, 2009.

Sincerely,

A handwritten signature in blue ink, appearing to read "Julie A. Fitch".

Julie A. Fitch, Director
Energy Division



Ron van der Leeden
Rates, Revenues & Tariffs
8330 Century Park Court
San Diego, CA 92123-1548

Tel: 213-244-2009
Fax: 858.654.1788
RvanderLeeden@semprautilities.com

July 31, 2009

ADVICE LETTER 2100-E
(U902-M)

PUBLIC UTILITIES COMMISSION OF THE STATE OF CALIFORNIA

**SUBJECT: CUSTOMER ENERGY NETWORK—IMPLEMENTATION OF ELECTRONIC
CONSENT**

PURPOSE

The purpose of this Advice Letter (AL) is to request California Public Utilities Commission (Commission) approval for a process whereby SDG&E can allow its customers to electronically consent to send their metered interval data to a SDG&E-authorized 3rd party provider by using SDG&E's Customer Energy Network (CEN) service. Currently CEN, with written customer consent, provides customers an option to send their metered interval data to a SDG&E-authorized 3rd party provider using an existing online customer channel. The modified CEN service will allow for electronic authorization and transmittal of customer data to authorized 3rd party providers. Customers can then readily access their daily energy usage for purposes of making informed energy management decisions.

BACKGROUND

SDG&E, in cooperation with 3rd party providers, is interested in providing customers with energy usage information through leveraging opportunities related to Smart Meter (automated meter technology) and web tools available through various companies in the online environment. Customers with access to these interactive, on-line tools will be able to view their daily energy consumption, giving them the ability to identify inefficient appliances and measure the impact of energy efficiency improvements. These tools, at no charge to the customer, will benefit customers by allowing them to make informed decisions that may reduce their energy consumption.

SDG&E has designed a "Customer Energy Network" an on-line channel which provides customers a self-service option for sending their interval data to SDG&E's authorized 3rd party providers. Currently, to gain access to the CEN service, a customer must have an installed smart meter, and must consent in writing to authorize SDG&E to provide usage data to a 3rd party provider. The CEN will require the customer to have an account registered with SDG&E's My Account online service and will allow the customer to enroll via the My Account web portal. CEN is an innovative service providing customers with more choices and increased convenience in accessing their SDG&E usage information and receiving messages from SDG&E.

IMPLEMENTATION

SDG&E's CEN will initially utilize file format(s) compatible with authorized 3rd party providers for the transmittal of customer interval data. SDG&E plans to migrate to a generally accepted, open-standards format for providing interval data to 3rd party providers, once a format is established and made available. Once electronic consent is approved by the Commission, customers will have the option to sign up for the program through a new function in SDG&E's "My Account" site where the customer will need to first approve the CEN Terms & Conditions (see attached new form 175-1000) to authorize SDG&E to send interval data to 3rd party providers. Customers will also be directed to SDG&E's My Account site from 3rd party provider sites to sign up for the service. Upon enrollment, the authorized 3rd party provider will be sent historical interval data as well as daily interval data. Interval energy use data sent to authorized 3rd party providers will be encrypted and will not contain private customer information such as name, address and phone number. To further protect customer information, a unique customer identifier will be used when transmitting customer data. Customers must be a registered My Account user and may opt-out of the service at any time. Once a customer has elected to opt-out, data will no longer be provided to the 3rd party provider. The 3rd party provider will be contractually obligated to delete all historical customer data from its databases unless the customer elects for the 3rd party provider to retain it. Process flow diagrams are included as Attachments B and C to provide an overview of the enrollment and opt-out processes.

Therefore, by approving the instant filing, a customer will be able to electronically authorize SDG&E to submit their usage data to an authorized 3rd party provider. Implementation costs are estimated between \$650K and \$750K, funded through current AMI contingency funding and energy efficiency education and outreach funding. Furthermore, should a ruling or decision issued in Rulemaking (R.) 08-12-009 supersede SDG&E's proposal herein, SDG&E will revise its process accordingly.

EFFECTIVE DATE

SDG&E believes this filing is subject to Energy Division disposition and should be classified as Tier 2 (effective after staff approval) pursuant to GO 96-B. SDG&E respectfully requests that this filing be approved effective September 1, 2009, 30 days from the date filed.

PROTEST

Anyone may protest this Advice Letter to the California Public Utilities Commission. The protest must state the grounds upon which it is based, including such items as financial and service impact, and should be submitted expeditiously. The protest must be made in writing and must be received within 20 days of the date this Advice Letter was filed with the Commission. There is no restriction on who may file a protest. The address for mailing or delivering a protest to the Commission is:

CPUC Energy Division
Attention: Tariff Unit
505 Van Ness Avenue
San Francisco, CA 94102

Copies of the protest should also be sent via e-mail to the attention of both Honesto Gatchalian (jinj@cpuc.ca.gov) and Maria Salinas (mas@cpuc.ca.gov) of the Energy Division. A copy of the protest should also be sent via both e-mail and facsimile to the address shown below on the same date it is mailed or delivered to the Commission.

Attn: Megan Caulson
Regulatory Tariff Manager
8330 Century Park Court, Room 32C
San Diego, CA 92123-1548
Facsimile No. (858) 654-1748
E-mail: mcaulson@semprautilities.com

NOTICE

A copy of this filing has been served on the utilities and interested parties shown on the attached list, including interested parties to service list R.08-12-009 by either providing them a copy electronically or by mailing them a copy hereof, properly stamped and addressed.

Address changes should be directed to SDG&E Tariffs by facsimile at (858) 654-1748 or by e-mail at SDG&ETariffs@semprautilities.com.

RON VAN DER LEEDEN
Director – Rates, Revenues & Tariffs

(cc list enclosed)

CALIFORNIA PUBLIC UTILITIES COMMISSION

ADVICE LETTER FILING SUMMARY ENERGY UTILITY

MUST BE COMPLETED BY UTILITY (Attach additional pages as needed)

Company name/CPUC Utility No. **SAN DIEGO GAS & ELECTRIC (U 902)**

Utility type:

ELC

GAS

PLC

HEAT

WATER

Contact Person: Joff Morales

Phone #: (858) 650-4098

E-mail: jmorales@semprautilities.com

EXPLANATION OF UTILITY TYPE

ELC = Electric

GAS = Gas

PLC = Pipeline

HEAT = Heat

WATER = Water

(Date Filed/ Received Stamp by CPUC)

Advice Letter (AL) #: 2100-E

Subject of AL: Customer Energy Network – Implementation of Electronic Consent

Keywords (choose from CPUC listing): Establish Service, Forms,

AL filing type: Monthly Quarterly Annual One-Time Other

If AL filed in compliance with a Commission order, indicate relevant Decision/Resolution #:

N/A

Does AL replace a withdrawn or rejected AL? If so, identify the prior AL: N/A

Summarize differences between the AL and the prior withdrawn or rejected AL¹: N/A

Does AL request confidential treatment? If so, provide explanation: N/A

Resolution Required? Yes No

Tier Designation: 1 2 3

Requested effective date: 9/01/09

No. of tariff sheets: 3

Estimated system annual revenue effect (%): N/A

Estimated system average rate effect (%): N/A

When rates are affected by AL, include attachment in AL showing average rate effects on customer classes (residential, small commercial, large C/I, agricultural, lighting).

Tariff schedules affected: Form 175-1000 (07/09), Table of Contents

Service affected and changes proposed¹: N/A

Pending advice letters that revise the same tariff sheets: N/A

Protests and all other correspondence regarding this AL are due no later than 20 days after the date of this filing, unless otherwise authorized by the Commission, and shall be sent to:

CPUC, Energy Division

Attention: Tariff Unit

505 Van Ness Ave.,

San Francisco, CA 94102

mas@cpuc.ca.gov and jnj@cpuc.ca.gov

San Diego Gas & Electric

Attention: Megan Caulson

8330 Century Park Ct, Room 32C

San Diego, CA 92123

mcaulson@semprautilities.com

¹ Discuss in AL if more space is needed.

General Order No. 96-B
ADVICE LETTER FILING MAILING LIST

cc: (w/enclosures)

Public Utilities Commission

DRA

D. Appling
S. Cauchois
J. Greig
R. Pocta
W. Scott

Energy Division

P. Clanon
S. Gallagher
H. Gatchalian
D. Lafrenz
M. Salinas

CA. Energy Commission

F. DeLeon
R. Tavares

Alcantar & Kahl LLP

K. Harteloo

American Energy Institute

C. King

APS Energy Services

J. Schenk

BP Energy Company

J. Zaiontz

Barkovich & Yap, Inc.

B. Barkovich

Bartle Wells Associates

R. Schmidt

Braun & Blaising, P.C.

S. Blaising

California Energy Markets

S. O'Donnell
C. Sweet

California Farm Bureau Federation

K. Mills

California Wind Energy

N. Rader

Children's Hospital & Health Center

T. Jacoby

City of Chula Vista

M. Meacham
E. Hull

City of Poway

R. Willcox

City of San Diego

J. Cervantes
G. Lonergan
M. Valerio

Commerce Energy Group

V. Gan

Constellation New Energy

W. Chen

CP Kelco

A. Friedl

Davis Wright Tremaine, LLP

E. O'Neill
J. Pau

Dept. of General Services

H. Nanjo
M. Clark

Douglass & Liddell

D. Douglass
D. Liddell
G. Klatt

Duke Energy North America

M. Gillette

Dynegy, Inc.

J. Paul

Ellison Schneider & Harris LLP

E. Janssen

Energy Policy Initiatives Center (USD)

S. Anders

Energy Price Solutions

A. Scott

Energy Strategies, Inc.

K. Campbell
M. Scanlan

Goodin, MacBride, Squeri, Ritchie & Day

B. Cragg
J. Heather Patrick
J. Squeri

Goodrich Aerostructures Group

M. Harrington

Hanna and Morton LLP

N. Pedersen

Itsa-North America

L. Belew

J.B.S. Energy

J. Nahigian

Luce, Forward, Hamilton & Scripps LLP

J. Leslie

Manatt, Phelps & Phillips LLP

D. Huard
R. Keen

Matthew V. Brady & Associates

M. Brady

Modesto Irrigation District

C. Mayer

Morrison & Foerster LLP

P. Hanschen

MRW & Associates

D. Richardson

Pacific Gas & Electric Co.

J. Clark
M. Huffman
S. Lawrie
E. Lucha

Pacific Utility Audit, Inc.

E. Kelly

R. W. Beck, Inc.

C. Elder

San Diego Regional Energy Office

S. Freedman
J. Porter

School Project for Utility Rate Reduction

M. Rochman

Shute, Mihaly & Weinberger LLP

O. Armi

Solar Turbines

F. Chiang

Sutherland Asbill & Brennan LLP

K. McCrea

Southern California Edison Co.

M. Alexander
K. Cini
K. Gansecki
H. Romero

TransCanada

R. Hunter
D. White

TURN

M. Florio
M. Hawiger

UCAN

M. Shames

U.S. Dept. of the Navy

K. Davoodi
N. Furuta
L. DeLacruz

Utility Specialists, Southwest, Inc.

D. Koser

Western Manufactured Housing

Communities Association

S. Dey

White & Case LLP

L. Cottle

Interested Parties

R.08-12-009

ATTACHMENT A
ADVICE LETTER 2100-E

Cal. P.U.C. Sheet No.	Title of Sheet	Canceling Cal. P.U.C. Sheet No.
Original 21298-E	SAMPLE FORMS, FORM 175-1000, Sheet 1	
Revised 21299-E	TABLE OF CONTENTS, Sheet 1	Revised 21297-E
Revised 21300-E	TABLE OF CONTENTS, Sheet 12	Revised 21279-E



San Diego Gas & Electric Company
San Diego, California

Original Cal. P.U.C. Sheet No. 21298-E

Canceling _____ Cal. P.U.C. Sheet No. _____

SAMPLE FORMS

Sheet 1

FORM 175-1000

CUSTOMER ENERGY NETWORK – TERMS AND CONDITIONS

(07/09)

(See Attachment)

N
N

N
N
N

1C7

Advice Ltr. No. 2100-E

Decision No. _____

Issued by
Lee Schavrien
Senior Vice President
Regulatory Affairs

Date Filed Jul 31, 2009

Effective Sep 1, 2009

Resolution No. _____

Customer Energy Network Terms and Conditions

Online Usage Agreement

If you are a customer of San Diego Gas & Electric Company (“SDG&E”), you may use this online service (“Customer Energy Network” or “CEN”) only if you have a properly registered My Account User ID and you complete the CEN enrollment and authorization consistent with these Customer Energy Network Terms and Conditions. In addition, you only have access to this service if you have had a Smart Meter installed to your account and the data from the Smart Meter has been validated by SDG&E.

Online Services

SDG&E’s Customer Energy Network allows you to access online services provided by third-party service providers to whom you have authorized SDG&E to transmit your Smart Meter energy usage data and zip code.

SDG&E reserves the right to modify or discontinue any or all services offered through the Customer Energy Network at any time without notice. You may elect to use one or more of the services available without being obligated to use them all.

Customer Authorization and Consent

You specifically authorize SDG&E to release to the third-party provider(s) you have selected your energy usage data and zip code from the Smart Meter installed at your home for purposes of online presentment through services and tools developed and provided by such third-party provider(s). You further authorize SDG&E to send you general messages related to your energy usage through the online presentment tools provided by such third-party provider(s).

By enrolling in the Customer Energy Network you have agreed that:

You are subject to these CEN Terms and Conditions as long as you take part in the Customer Energy Network, including all its online services. By selecting the “I Agree” button when registering for the Customer Energy Network, you are confirming that you have read and accept these Terms and Conditions or any future modifications thereof as a pre-condition to your being granted access to CEN. When you meet the above requirements, and any requirements stated after this for any online utility service, you may be redirected to the third-party provider(s) to complete enrollment for their service(s) which will utilize your SDG&E data.

These Customer Energy Network Terms and Conditions are additional terms and conditions to the My Account Terms and Conditions. In case of conflict or inconsistency between them, these CEN Terms and Conditions take precedence over the My Account Terms and Conditions with respect to the Customer Energy Network.

Third-Party Sites

In order to use certain services and tools provided by third parties, you may need to enroll on such party’s website and access the service or tool on the third party’s website. Your use of such service and tools on a third party’s site will be governed by the provider’s terms and conditions of service.

You acknowledge and agree that SDG&E is not responsible for the availability or operation of third-party websites or the services or tools hosted on such sites. You also acknowledge and agree that SDG&E is not responsible for any content, advertising, or other materials on such sites and shall not be liable for any damages, losses or claims caused or alleged to be caused in connection with any content, services or materials available on or through such sites.

Password Guidelines

The unique User ID and password (collectively, “Password”) selected by you to access My Account or any online services offered through CEN must be held on a confidential basis by you and not given to other people. Anyone with knowledge of your Password can gain access to your My Account and your CEN

Customer Energy Network Terms and Conditions

account and all the services available within the account. If you have forgotten or lost your Password, online reminder capabilities are available to assist you in remembering it. As a condition of use, you must notify SDG&E immediately if you believe your Password has been lost or stolen. In such event, you can contact SDG&E immediately by email or by calling 1-800-411-SDGE (7343) (24 hours a day). You are responsible for maintaining the Password against improper disclosure. One of the terms and conditions of this agreement is that you are solely responsible for any claims, losses, damages, expenses and costs incurred by the use of your Password by others. SDG&E reserves the right to reset any Passwords.

Discontinue CEN Services (Opt-Out)

To withdraw from the Customer Energy Network or from any of the third-party services in which you are enrolled, go to the CEN service button within MyAccount. After you have cancelled and confirmed the cancellation of your enrollment in the deselected service(s), SDG&E will cease transmitting your Smart Meter energy usage data to the deselected third-party service provider, usually within 24 hours. You also may need to un-enroll at the third-party provider's website to ensure that data previously provided by SDG&E is destroyed by the third-party service provider.

If you opt out from a third-party CEN service provider's website without also opting out from CEN, SDG&E will cease transmitting your usage data to that third-party service provider, usually within 24 hours.

Other Terms and Conditions

- SDG&E has no responsibility for any failure or error in the Customer Energy Network, including without limitation any interruption, omission, mistake, malfunction or delay related thereto. All information contained within CEN is provided "as is" and "as available," although SDG&E will use its reasonable efforts to post the best data that is available. SDG&E makes no representation that any data posted is suitable for any particular purpose or use, or that any data posted is accurate, correct or complete. For example, there may be short-term data gaps in daily usage information caused by communication faults or delays. In the online display of your daily usage information, such gaps will show zero consumption for the gap period, even though you may have been consuming energy during that period and your Smart Meter has been recording your actual usage data for monthly billing purposes. No indirect, consequential, punitive or special damages will be assessed against either party in connection with CEN. SDG&E reserves the right in its sole opinion to prevent any user from accessing its web site in connection with CEN.
- The Customer Energy Network will be operated and used at all times subject to applicable laws, rules, regulations and decisions of federal and state governmental authorities having jurisdiction, as in effect from time to time, including without limitation the Public Utilities Commission of the State of California.
- Any dispute related to CEN shall be resolved pursuant to the laws of the State of California, without reference to its principles on conflicts of laws.
- Your use of CEN does not provide any legal right or interest in any intellectual property used in connection therewith, or derived there from or any text or other content posted in connection therewith, including without limitation any copyright, for which all rights are reserved by SDG&E.
- Use of CEN, and any SDG&E or third-party service accessed, is at your sole risk. Although SDG&E has endeavored to create a secure and reliable service, the confidentiality or security of any communication transmitted or accessible over the Internet cannot be guaranteed. We do encrypt your account information and usage data on our systems and in transmission and comply with all applicable laws in handling such information. Accordingly, SDG&E and its parent and affiliates are not responsible for the security of any information transmitted or accessed using the Internet. Actual or attempted unauthorized use of the CEN or any of the features, services or tools made available through the CEN may result in criminal and/or civil prosecution.



TABLE OF CONTENTS

Sheet 1

The following sheets contain all the effective rates and rules affecting rates, service and information relating thereto, in effect on the date indicated herein.

	<u>Cal. P.U.C. Sheet No</u>
TITLE PAGE.....	16015-E
TABLE OF CONTENTS.....	21299, 21174, 21099, 21012, 21255, 21286, 21176-E 20424, 21250, 21251, 21287, 21300, 19529-E
PRELIMINARY STATEMENT:	
I. General Information.....	8274, 18225, 18226-E
II. Balancing Accounts	
Description/Listing of Accounts	19402, 20706-E
California Alternate Rates for Energy (CARE) Balancing Account.....	19406, 19407-E
Rewards and Penalties Balancing Account (RPBA).....	19408, 19409-E
Transition Cost Balancing Account (TCBA).....	19410, 19411, 19412, 19413, 19414-E
Post-1997 Electric Energy Efficiency Balancing Account (PEEEBA).....	19415, 19416-E
Research, Development and Demonstration (RD&D) Balancing Account.....	19417, 19418-E
Renewables Balancing Account (RBA).....	19419, 19420-E
Tree Trimming Balancing Account (TTBA).....	19421, 19422-E
Baseline Balancing Account (BBA).....	19423, 19424-E
EI Paso Turned-Back Capacity Balancing Account (EPTCBA).....	19425-E
Energy Resource Recovery Account (ERRA).....	19426, 19712, 21122, 19429, 19430-E
Low-Income Energy Efficiency Balancing Account (LIEEBA).....	19431, 19432-E
Electric Vehicle Balancing Account (EVBA).....	19433, 19434-E
Non-Fuel Generation Balancing Account (NGBA).....	21294, 21295, 21296-E
Electric Procurement Energy Efficiency Balancing Account (EPEEBA).....	19438-E
Common Area Balancing Account (CABA).....	19439-E
Nuclear Decommissioning Adjustment Mechanism (NDAM).....	19440-E
Pension Balancing Account (PBA).....	19441, 19442-E
Post-Retirement Benefits Other Than Pensions Balancing Account (PBOPBA).....	19443, 19444-E
Community Choice Aggregation Implementation Balancing Account (CCAIBA).....	19445-E

(Continued)



TABLE OF CONTENTS

Sheet 12

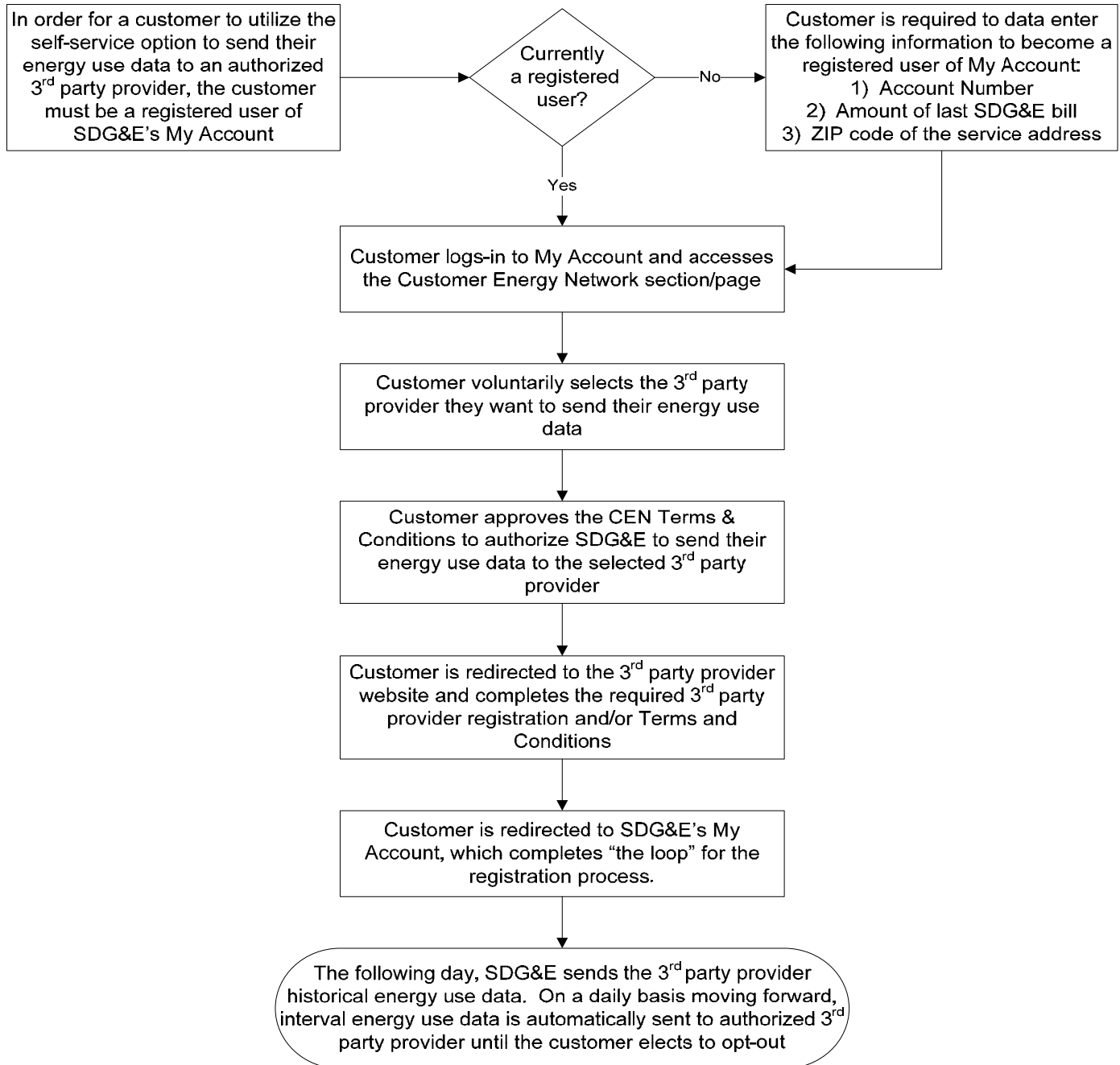
SAMPLE FORMS

<u>Form No.</u>	<u>Date</u>	<u>Applications, Agreements and Contracts</u>	<u>Cal. P.U.C. Sheet No.</u>
165-1000	06-09	Participating Load Pilot Customer Contract	21271-E
165-1001	06-09	Aggregator Agreement for Participating Load Pilot	21272-E
165-1002	06-09	Notice to Add, Change or Terminate Aggregator for PLP	21273-E
165-1003	06-09	Notice by Aggregator to Add or Delete Customers for PLP	21274-E
175-1000	07-09	Customer Energy Network – Terms and Conditions	21298-E
<u>Deposits, Receipts and Guarantees</u>			
144-0812	03-09	Critical Peak Pricing - Event Notification Information Form	21134-E
144-0813	03-09	Critical Peak Pricing - Future Communications Contact Information Form	21135-E
155-100	03-06	Application and Contract for Unmetered Service.....	19128-E
160-1000	02-08	Public Agency and Wastewater Agency Agreement.....	21022-E
160-2000	09-08	Customer Renewable Energy Agreement.....	21023-E
101-00197	04-98	Payment Receipt for Meter Deposit	11197-E
101-363	04-08	Guarantor's Statement	20604-E
101-1652B	03-68	Receipt of Payment.....	2501-E
103-1750-E		Return of Customer Deposit.....	2500-E
<u>Bills and Statements</u>			
108-01214	02-01	Residential Meter Re-Read Verification	14280-E
110-00432	09-07	Form of Bill - General, Domestic, Power, and Lighting Service - Opening, Closing, and Regular Monthly Statements.....	20302-E
110-00432/2	06-07	Form of Bill - Pink Past Due Format.....	20120-E
<u>Collection Notices</u>			
101-00751	03-07	Final Notice Before Disconnect (MDTs).....	20000-E
101-00752	03-07	Final Notice Before Disconnect (delivered)	20001-E
101-00753	02-04	Back of Urgent Notice Applicable to Forms 101-00753/1 through 101-00753/11	16943-E
101-00753/1	04-08	Urgent Notice Payment Request Security Deposit to Establish Credit.....	20605-E
101-00753/2	03-05	Urgent Notice Payment Request Security Deposit to Re-Establish Credit.	18084-E
101-00753/3	02-04	Urgent Notice Payment Request for Past Due Security Deposit	16946-E
101-00753/4	02-04	Urgent Notice Payment Request for Past Due Bill	16947-E
101-00753/5	02-04	Urgent Notice Payment Request for Returned Payment.....	16948-E
101-00753/6	02-04	Urgent Notice Payment Request for Final Bill.	16949-E
101-00753/7	02-04	Urgent - Sign Up Notice for Service	16950-E
101-00753/8	02-04	Reminder Notice – Payment Request for Past Due Bill	16951-E
101-00753/9	02-04	Closing Bill Transfer Notification	16952-E
101-00753/10	02-04	Payment Agreement Confirmation	16953-E
101-00753/11	02-04	ESP Reminder Notice – Payment Request for Past Due Bill	16954-E
101-00754	03-05	Final Notice Before Disconnection (mailed), Notice of Past Due Closing Bill, and Notice of Past Due Closing Bill Final Notice	18085-E
101-01071	03-07	Notice of Disconnect (delivered).....	20002-E
101-01072	03-07	Notice of Disconnect (MDTs).....	20003-E
101-02171	02-04	Notice to Landlord - Termination of Tenant's Gas/Electric Service (two or more units)	16957-E
101-02172	03-09	Notice to Tenants - Request for Termination of Gas and Electric Service.	21139-E
101-2452G	02-04	Customer Payment Notification.....	16959-E

(Continued)

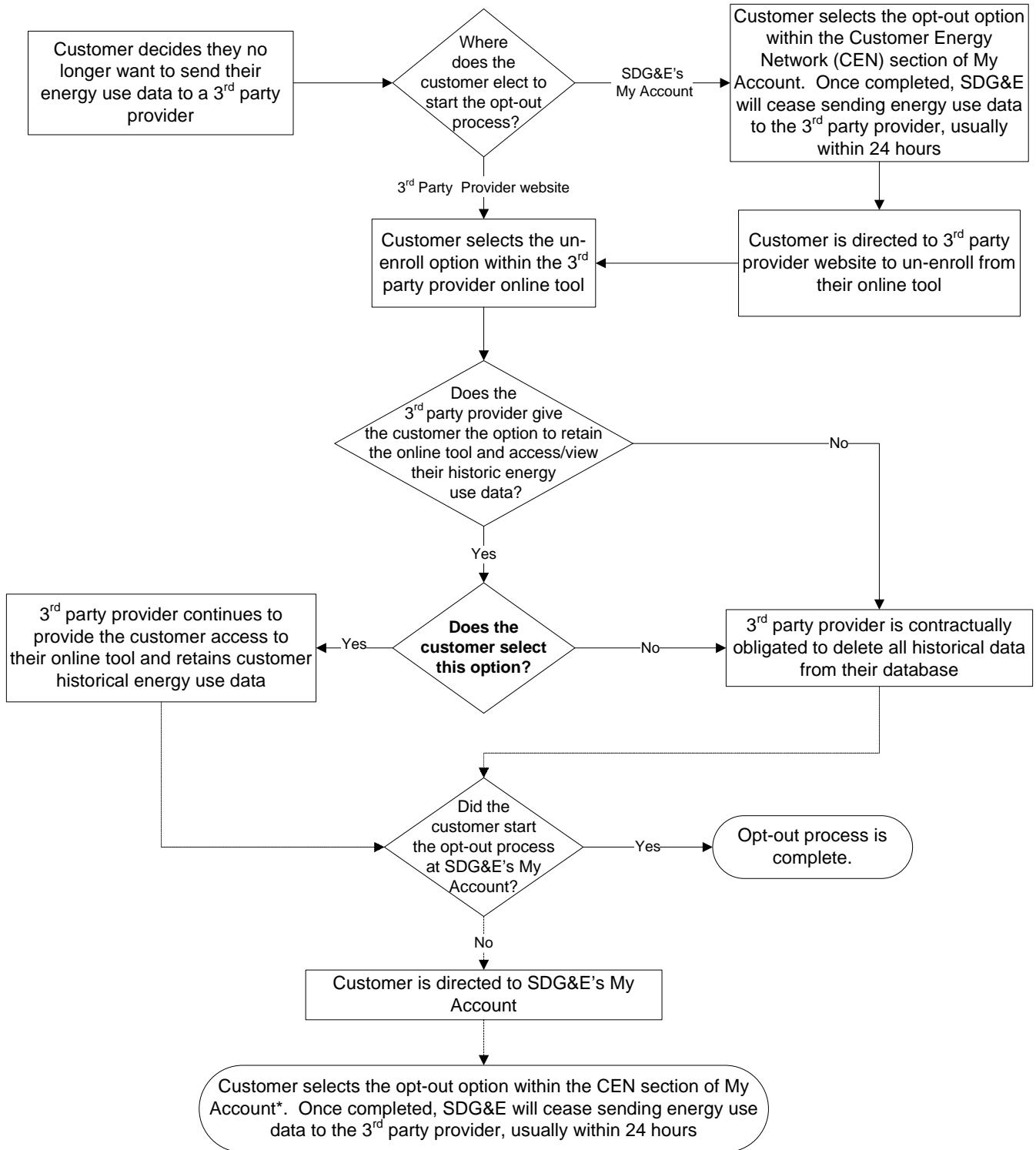
**San Diego Gas & Electric – Advice Letter 2100-E
Attachment B
Customer Energy Network – Implementation of Electronic Consent
7/31/09**

Process Diagram for Customers to Send Interval Energy Use Data to an SDG&E Authorized 3rd Party Provider



**San Diego Gas & Electric – Advice Letter 2100-E
Attachment C
Customer Energy Network – Implementation of Electronic Consent
7/31/09**

Process Diagram for Customers to Opt-Out of Sending Their Interval Energy Use Data to a SDG&E Authorized 3rd Party Provider



* If the customer un-enrolls from the 3rd party provider tool and does not opt-out within the CEN section of My Account, SDG&E will be notified by the 3rd party provider the customer has un-enrolled from their tool. SDG&E will then stop sending energy use data to the 3rd party provider, usually within 24 hours.